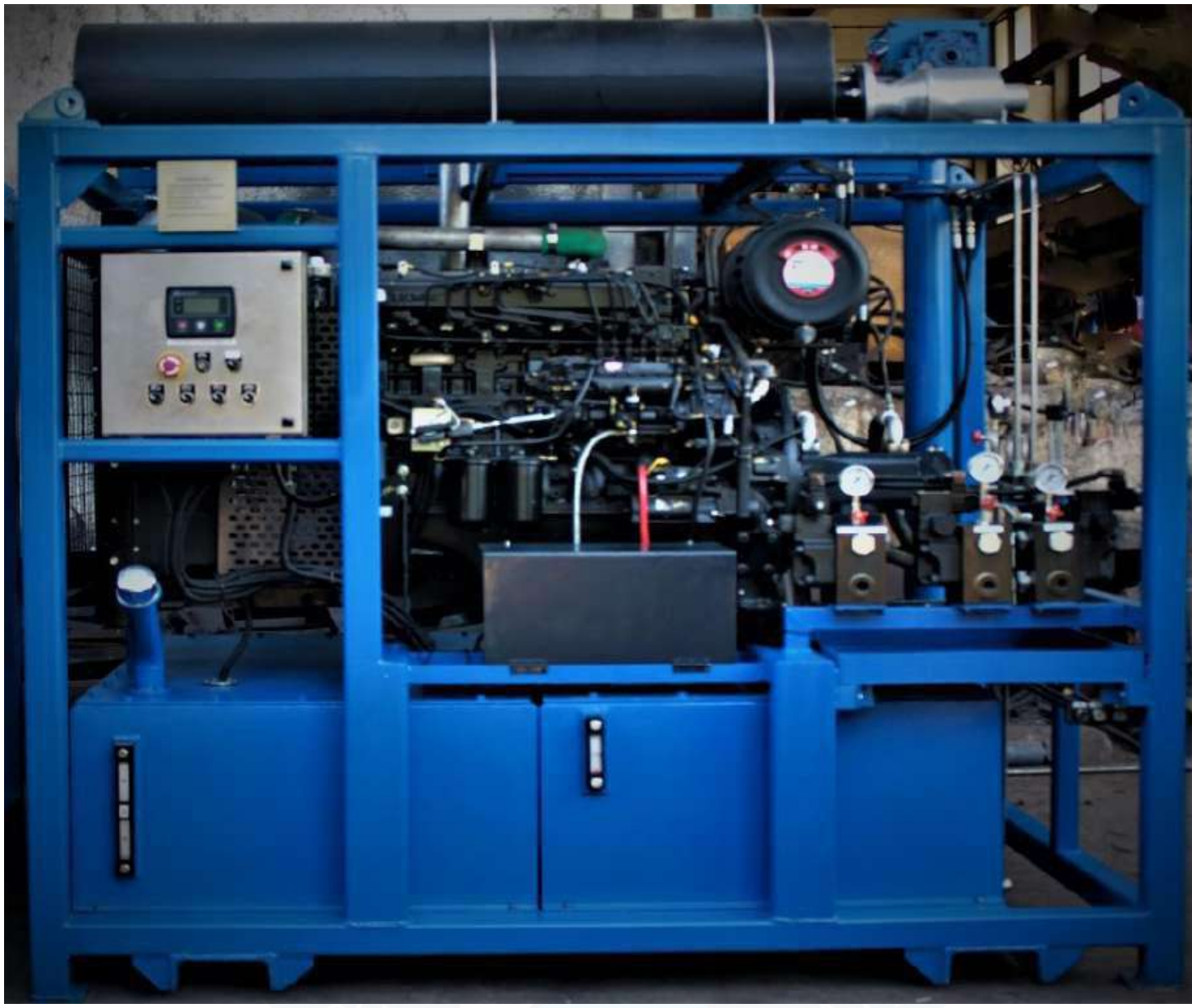


**SYNERGY DIESEL ENGINE DRIVEN HYDRAULIC POWER PACK FOR BRUSH KART**



Dimensions :	2100 mm x 1600mm x 2323mm (L x B x H)
Gross weight :	2200kg (Aprox. Wet)
Hydraulic reservoir :	350 Lits.
Maximum flow :	293 LPM@1800( P1 & P2-70.3cc/rev , P3-22.5 cc/rev)
Operating Pressure :	150 Bar for Pump 1 & 2, 200 Bar for pump 3
Pump Max. pressure. :	200 Bar.
Pump. :	Triple Tandem Vane Pump
Hydraulic oil :	ISO GRADE-68 above 30°C- ISO GRADE 46- 7°to30°C



# SYNERGY DIESEL ENGINE DRIVEN HYDRAULIC POWER PACK FOR BRUSH KART

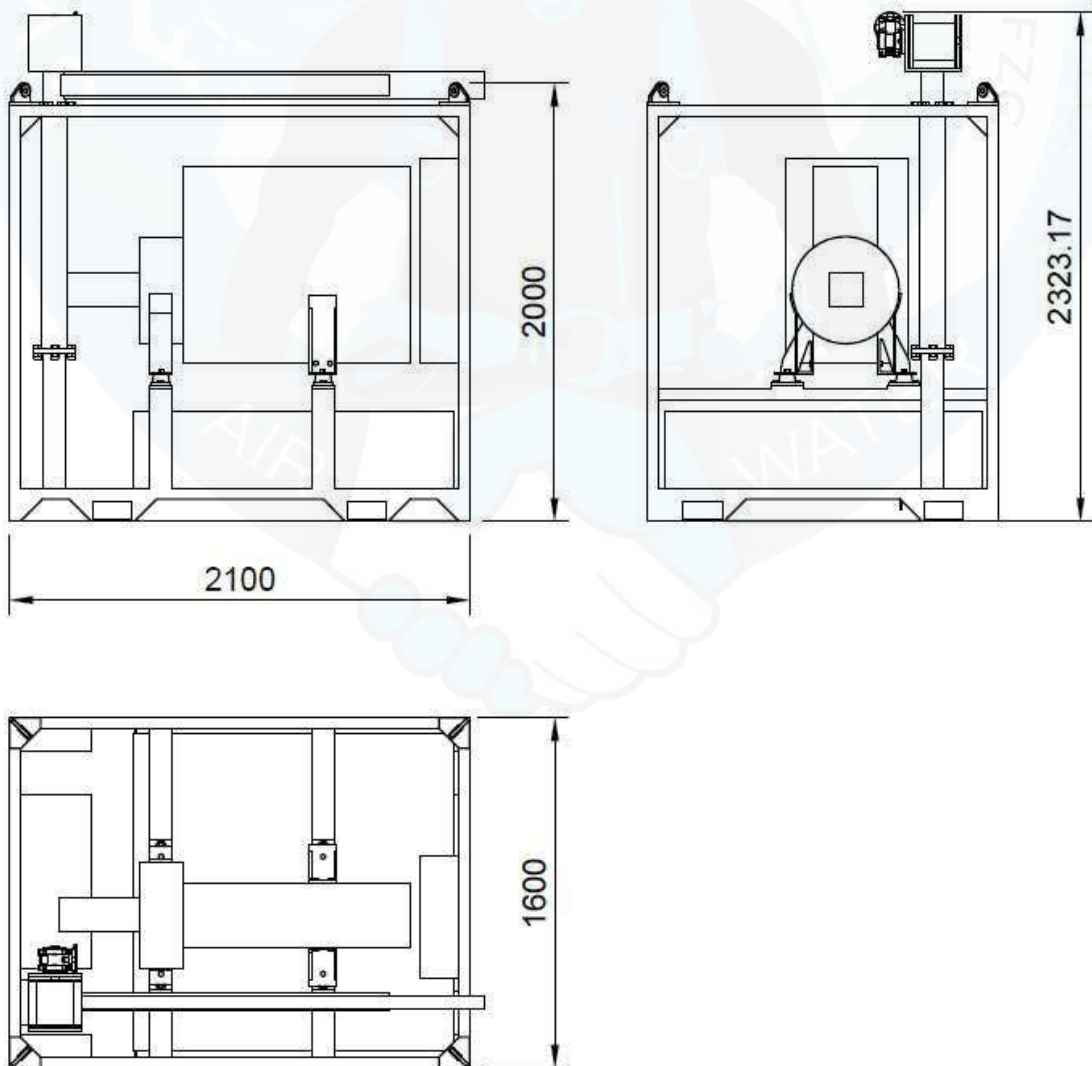
## General Information

### Description

The Diesel Hydraulic Power Unit (DHPU) is an open frame type power unit designed to provide hydraulic power to under water tools (2 Brush-karts and polishing tool). The unit is self-contained.

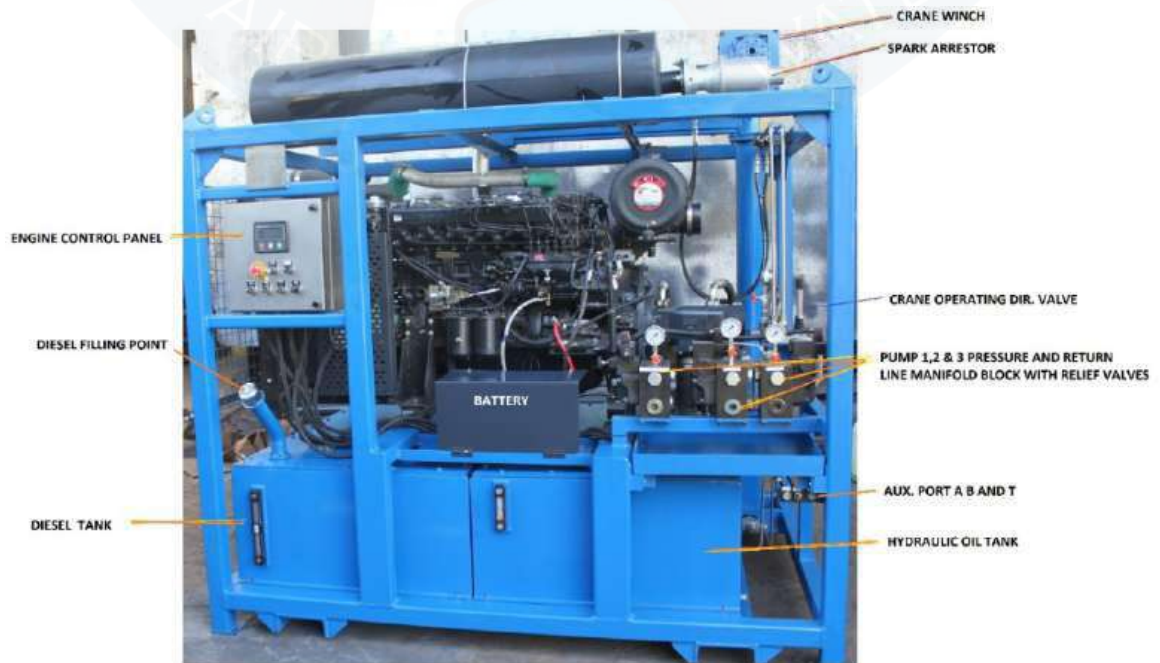
The DHPU, powered by 6 cylinder, 105@1500 RPM (120 HP@1800 RPM) Volvo Eicher (VECV) diesel engine. Attached to the engine is a three section Tandem Vane pump. All three sections provide Hydraulic fluid power for the two hydraulic Brush-karts and one Polishing tool or the crane and Aux. equipment.

- Instrument panel with engine speed, oil temperature, oil pressure speed/RPM display.
- A crane is provided for lifting the brush karts.
- Safety systems with over speed shutdown, Emergency Stop and spark arrestor.
- Shutdowns for low oil pressure, high oil temperature high coolant temperature.
- 500 liters diesel reservoir with level gauge, drain port and filler breather
- System relief valve set at 2000 PSI/140 Bar. Can be adjusted according to tool requirement pump 1 & 2 -max 120 bar, pump 3- 150 bar and crane relief valve 60 bar.
- 500 liters hydraulic reservoir with level gauge, cleanout cover, suction strainer with , return filters x 3, drain port and filler breather
- The power pack is Housed in a s steel frame with 4 x lifting Pad eyes forklift pockets in both directions and lifting sling.






**SYNERGY DIESEL ENGINE DRIVEN HYDRAULIC POWER PACK FOR BRUSH KART**






**SYNERGY DIESEL ENGINE DRIVEN HYDRAULIC POWER PACK FOR BRUSH KART**

# Contact us

 29th Street, Amman Road, Behind Al Huraiz Est. For Industry,  
Al Qusais, Industrial Area - 1,  
Dubai, United Arab Emirates

-  Tel : 009714 2580533 
-  Fax : 042516664 
-  UAE : 00971505648178 
-  UK : 00447951966260 

-  Website : [www.synergiequipment.com](http://www.synergiequipment.com)
-  Email : [ram@synergiequipment.com](mailto:ram@synergiequipment.com)
-  For Sale : [info@synergiequipment.com](mailto:info@synergiequipment.com)

