



# SYNERGY

INNOVATIVE DIVING EQUIPMENT TRADING LLC

INSPIRING • ENGINEERING • INNOVATION

UAE • UK • INDIA • AZERBAIJAN



## Synergy ABS-Classed 3-Diver Twin Basket Launch & Recovery System (LARS)

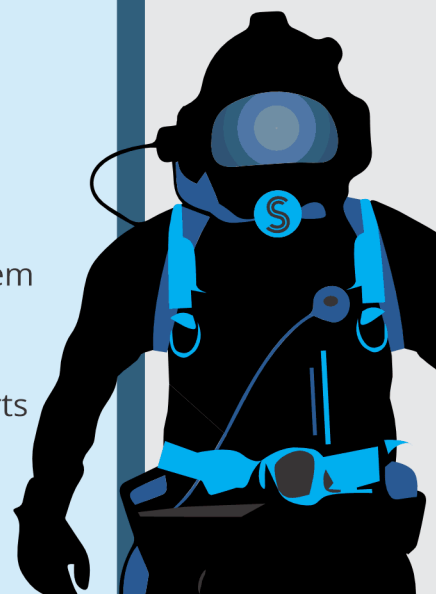
Synergy's 3-Diver Twin Basket Launch and Recovery System (LARS) is engineered for high-performance offshore diving operations, combining increased diver capacity with compact design efficiency.

Fully compliant with ABS marine-class requirements, the system ensures safe, smooth, and reliable deployment and recovery even in demanding offshore environments.

### System Overview – Model: D3-24

The D3-24 is a Side-by-Side Twin Basket LARS mounted on a single skid assembly, developed to address space constraints while maintaining compliance with relevant international standards for diver safety and system performance.

This unit is part of Synergy Group's standard LARS product line and supports surface-supplied diving operations with optimized footprint and flexibility.



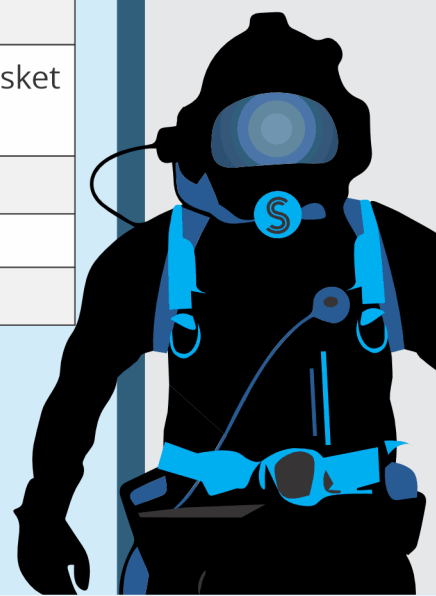


# SYNERGY

INNOVATIVE DIVING EQUIPMENT TRADING LLC

INSPIRING • ENGINEERING • INNOVATION

UAE • UK • INDIA • AZERBAIJAN



## ABS-Classed 3-Diver Twin Basket Launch & Recovery System (LARS)

IMCA Code:	Description:
IMCA D018:	Code of Practice for the Initial and Periodic Examination, Testing, and Certification of Diving Plant and Equipment
IMCA D023:	Design – Diving Equipment Systems Inspection Guidance Note
IMCA D014:	International Code of Practice for Offshore Diving

Sr. No.	Description:
1	1 x Skid for Mounting All LARS Equipment
2	1 x Rugged A-Frame (2000 kg Rated) for Luffing Diver Baskets and Guide Weights
3	2 x Hydraulic Luffing Cylinders with Stainless Steel Shafts
4	2 x Main Man-Riding Winches for Diver Basket Deployment and Recovery
5	2 x Guide Wire Man-Riding Winches for Guide Weight Deployment and Recovery
6	Guide Wire and Basket Ropes Routed via Sheaves on A-Frame Top
7	1 x Dedicated Main HPU & Electrical DB for A-Frame Luffing and Main Diver Basket Winches
8	1 x Dedicated Standby HPU & Electrical DB for Standby Diver Basket Winch
9	1 x Emergency HPU (Cross-Over Capable to Either Main HPU)
10	1 x Main Diver Basket with 20 m <sup>3</sup> Onboard Gas
11	1 x Standby Diver Basket with 10 m <sup>3</sup> Onboard Gas



# SYNERGY

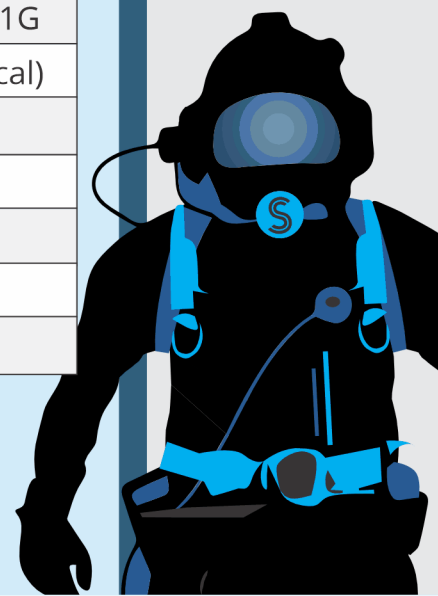
INNOVATIVE DIVING EQUIPMENT TRADING LLC

INSPIRING • ENGINEERING • INNOVATION

UAE • UK • INDIA • AZERBAIJAN



Description:	Specification:
Diver Capacity:	2 Divers & 1 Standby Diver
Maximum Working Depth:	60 m
SWL of A-Frame 2000 KG:	2000 KG
Main Dive Cage Mass (without cylinders):	400 KG
Main Dive Cage – Maximum Gross Mass:	950 KG
Main Dive Cage Guide Weight – Maximum Mass:	200 KG
Standby Dive Cage Guide Weight – Maximum Mass:	150 KG
Main Dive Cage Guide Weight System SWL:	1200 KG
Standby Dive Cage Mass (without cylinders):	380 KG
Standby Dive Cage – Maximum Gross Mass:	650 KG
Standby Dive Cage Guide Weight SWL (Single Fall):	650 KG
SWL of Main Basket Winch in LARS	1000 KG
SWL of Main Basket Guide Wire Winch in LARS (Single Fall)	600 KG
SWL of Standby Basket Winch in LARS	700 KG
SWL of Standby Basket Guide Wire Winch in LARS (Single Fall)	500 KG
Operational Sea State	Sea State-2 (Max. 2m Hs) -15 to +50 °C
Temperature Range	1G (Longitudinal), 1G
Dynamic Loading	(Lateral), 2G (Vertical)
Overall Length (A-Frame Luffed Outboard)	6140 mm ±
Overall Length (A-Frame Stowed)	4040 mm
LARS Overall Weight (Incl. Guide Weight & Baskets)	6500 KG
Overall Width (Inboard and Deployed)	2250 mm
Overall Height (A-Frame Stowed, Max.)	2250 mm





# SYNERGY

INNOVATIVE DIVING EQUIPMENT TRADING LLC

INSPIRING • ENGINEERING • INNOVATION

UAE • UK • INDIA • AZERBAIJAN



## Electrical Data:

Description:	Detail:
Power:	2 X 11 KW, 22KW Peak
Voltage:	415 V $\pm$ 10%, 50-60 Hz
Amperage:	50 A Peak (2 X 11 KW)
Phase:	3 Phase + Earth
Fault Current - Max:	10kA (Max fault current at the point of supply)

## LARS Components:

LARS is designed as an assembly of different components and optional fit outs available to suit the requirement of site conditions / customer requirement.

The following are the main component and options available in LARS.

## Components:

- Base Skid & A Frame
- Main & Stand by Basket
- Main Winch for Main Basket & Stand by Basket
- Guide wire Winch for Main Basket & Stand by Basket
- 11 KW Hydraulic Power Unit Main 1 & 2
- 11 KW Hydraulic Power unit Emergency-1
- HPU-2 Electrical Control Box IP 66 RATED
- Emergency HPU Electrical control Box IP 66 RATED
- Over hoist protection Limit Switch







# SYNERGY

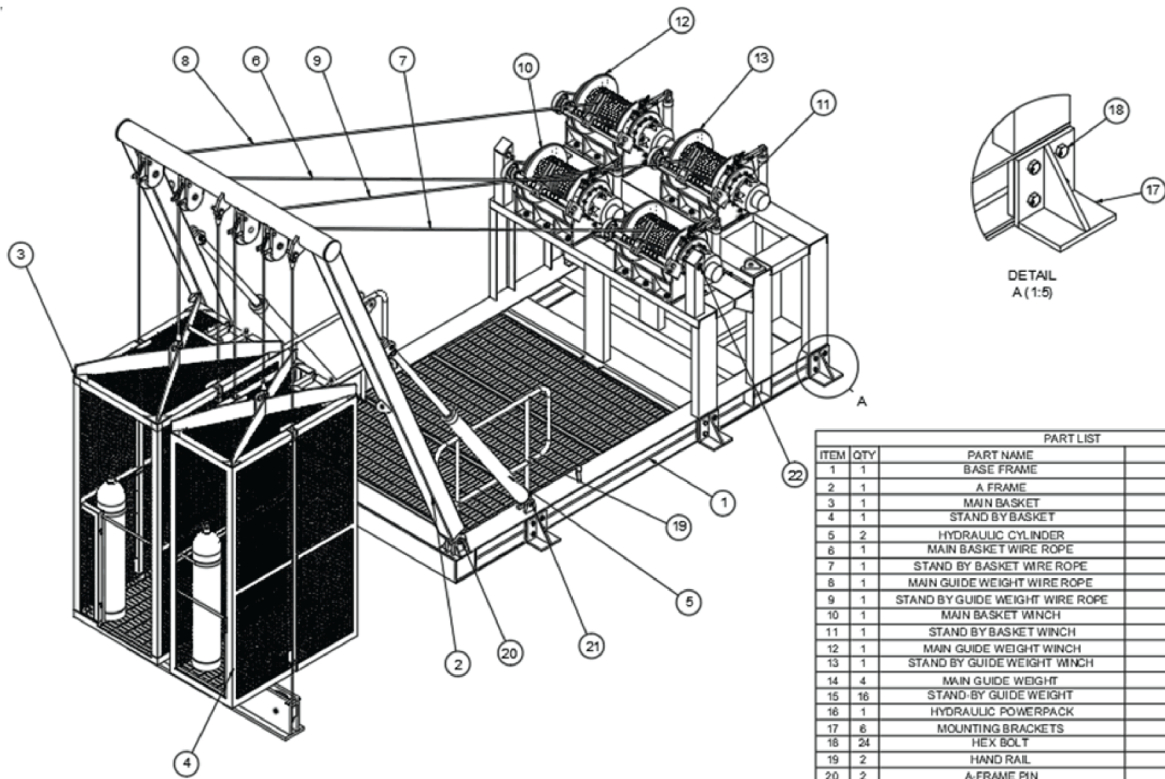
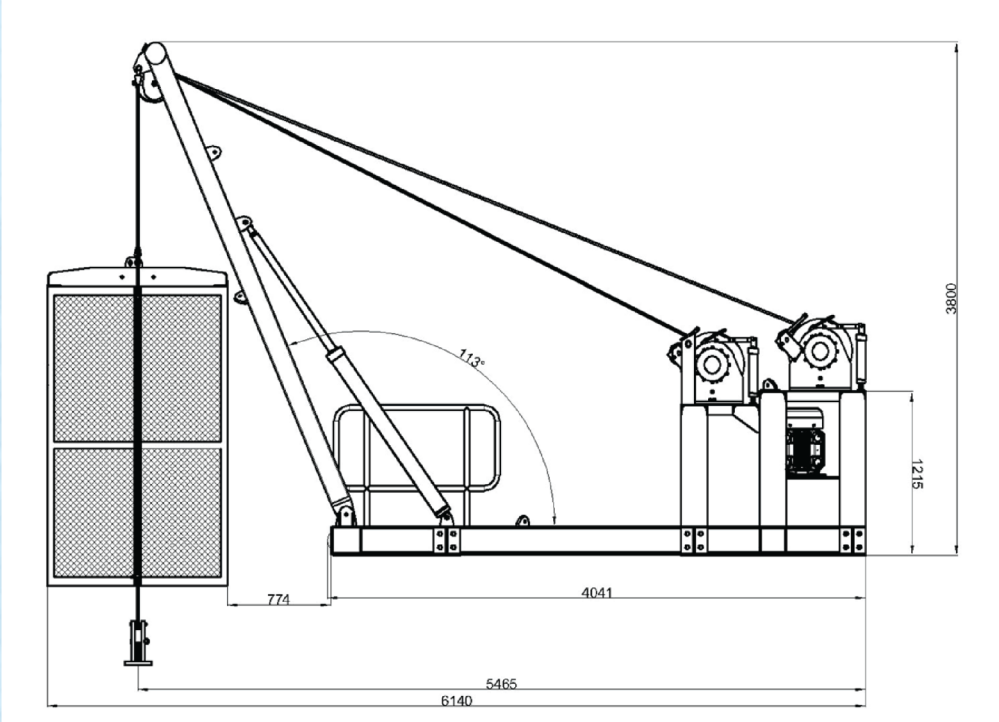
INNOVATIVE DIVING EQUIPMENT TRADING LLC

INSPIRING • ENGINEERING • INNOVATION

UAE • UK • INDIA • AZERBAIJAN

## ABS-Classed 3-Diver Twin Basket Launch & Recovery System (LARS)

### Main Skid & A-Frame



PART LIST			
ITEM	QTY	PART NAME	MATERIAL / REMARK
1	1	BASE FRAME	SVOE/TWL/BSF-611
2	1	A FRAME	SVOE/TWL/AFR-621
3	1	MAIN BASKET	SVOE/TWL/MNC-631
4	1	STAND BY BASKET	SVOE/TWL/SBC-641
5	2	HYDRAULIC CYLINDER	SVOE/TWL/HDC-651
6	1	MAIN BASKET WIRE ROPE	Ø13
7	1	STAND BY BASKET WIRE ROPE	Ø13
8	1	MAIN GUIDE WEIGHT WIRE ROPE	Ø13
9	1	STAND BY GUIDE WEIGHT WIRE ROPE	Ø13
10	1	MAIN BASKET WINCH	SVOE/TWL/WNH-661
11	1	STAND BY BASKET WINCH	SVOE/TWL/WNH-661
12	1	MAIN GUIDE WEIGHT WINCH	SVOE/TWL/WNH-661
13	1	STAND BY GUIDE WEIGHT WINCH	SVOE/TWL/WNH-661
14	4	MAIN GUIDE WEIGHT	SVOE/TWL/MGW-661
15	16	STAND BY GUIDE WEIGHT	SVOE/TWL/SGW-671
16	1	HYDRAULIC POWERPACK	SVOE/TWL/HYP-681
17	6	MOUNTING BRACKETS	SVOE/TWL/MB-603
18	24	HEX BOLT	HT CLASS 10.9 STEEL
19	2	HAND RAIL	SVOE/TWL/HR-602
20	2	A-FRAME PIN	SVOE/TWL/PIN-601
21	2	HYDRAULIC CYLINDER PIN	SVOE/TWL/PIN-601
22	2	LOCKING PIN	SVOE/TWL/PIN-601



# SYNERGY

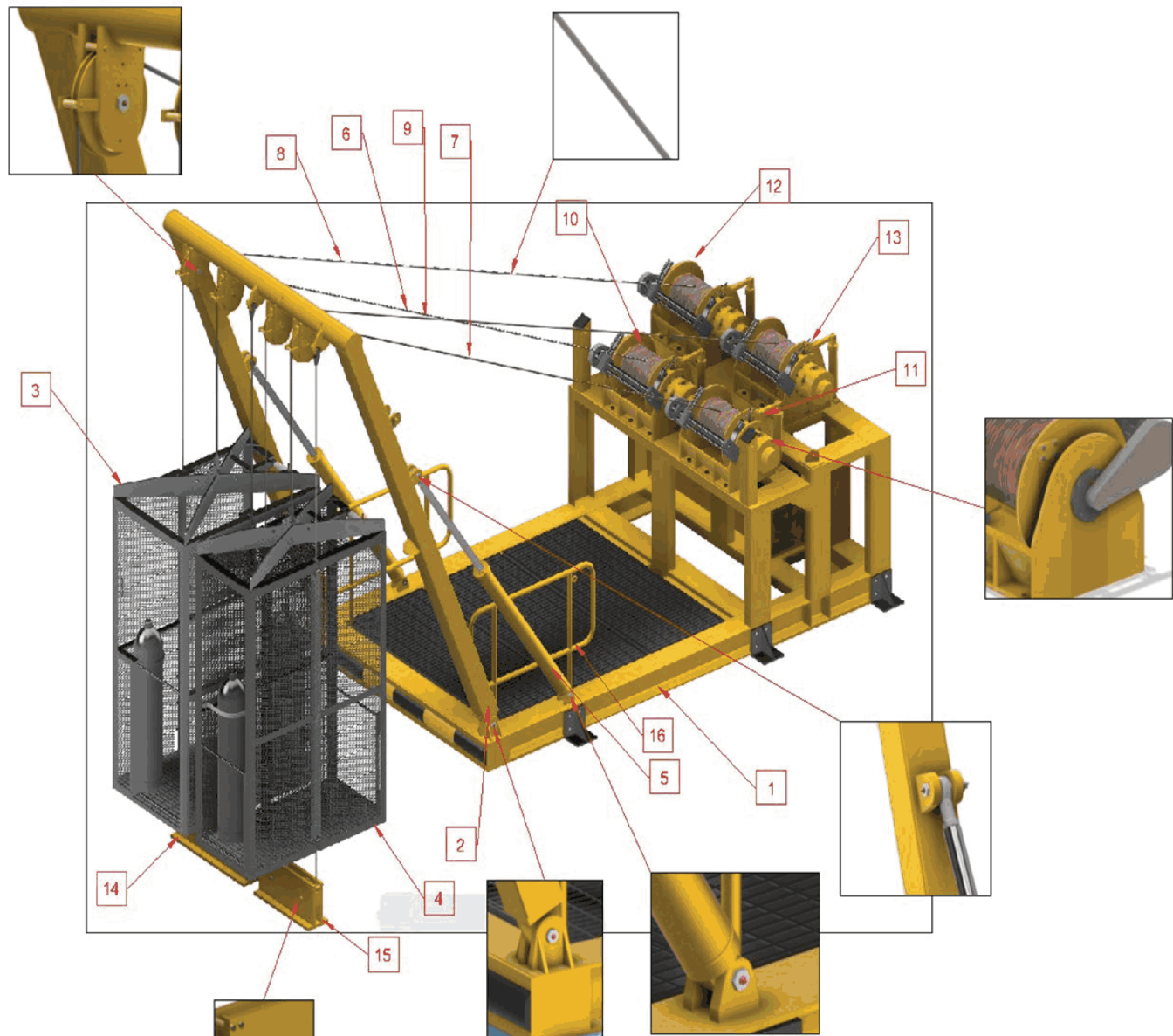
INNOVATIVE DIVING EQUIPMENT TRADING LLC

INSPIRING • ENGINEERING • INNOVATION

UAE • UK • INDIA • AZERBAIJAN

## ABS-Classed 3-Diver Twin Basket Launch & Recovery System (LARS)

### Lubrication



1	BASE FRAME	9	STAND-BY GUIDE WEIGHT WIRE ROPE
2	A-FRAME	10	MAIN BASKET WINCH
3	MAIN BASKET	11	STAND-BY BASKET WINCH
4	STAND-BY BASKET	12	MAIN GUIDE WEIGHT WINCH
5	HYDRAULIC CYLINDER	13	STAND-BY GUIDE WEIGHT WINCH
6	MAIN BASKET WIRE ROPE	14	MAIN GUIDE WEIGHT
7	STAND-BY BASKET WIRE ROPE	15	STAND-BY GUIDE WEIGHT
8	MAIN GUIDE WEIGHT WIRE ROPE	16	HAND RAIL



# SYNERGY

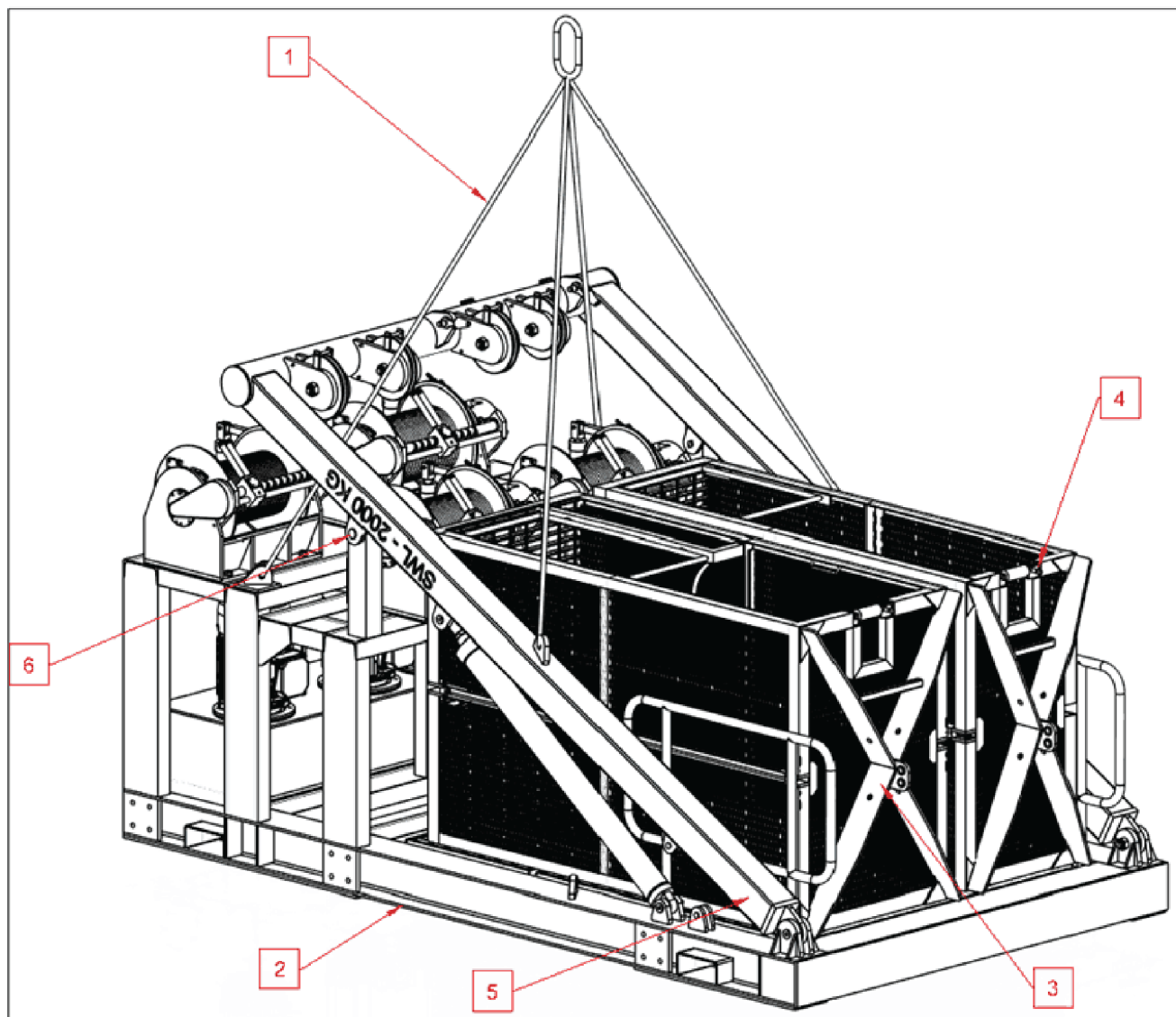
INNOVATIVE DIVING EQUIPMENT TRADING LLC

INSPIRING • ENGINEERING • INNOVATION

UAE • UK • INDIA • AZERBAIJAN

## ABS-Classed 3-Diver Twin Basket Launch & Recovery System (LARS)

### GA Drawing



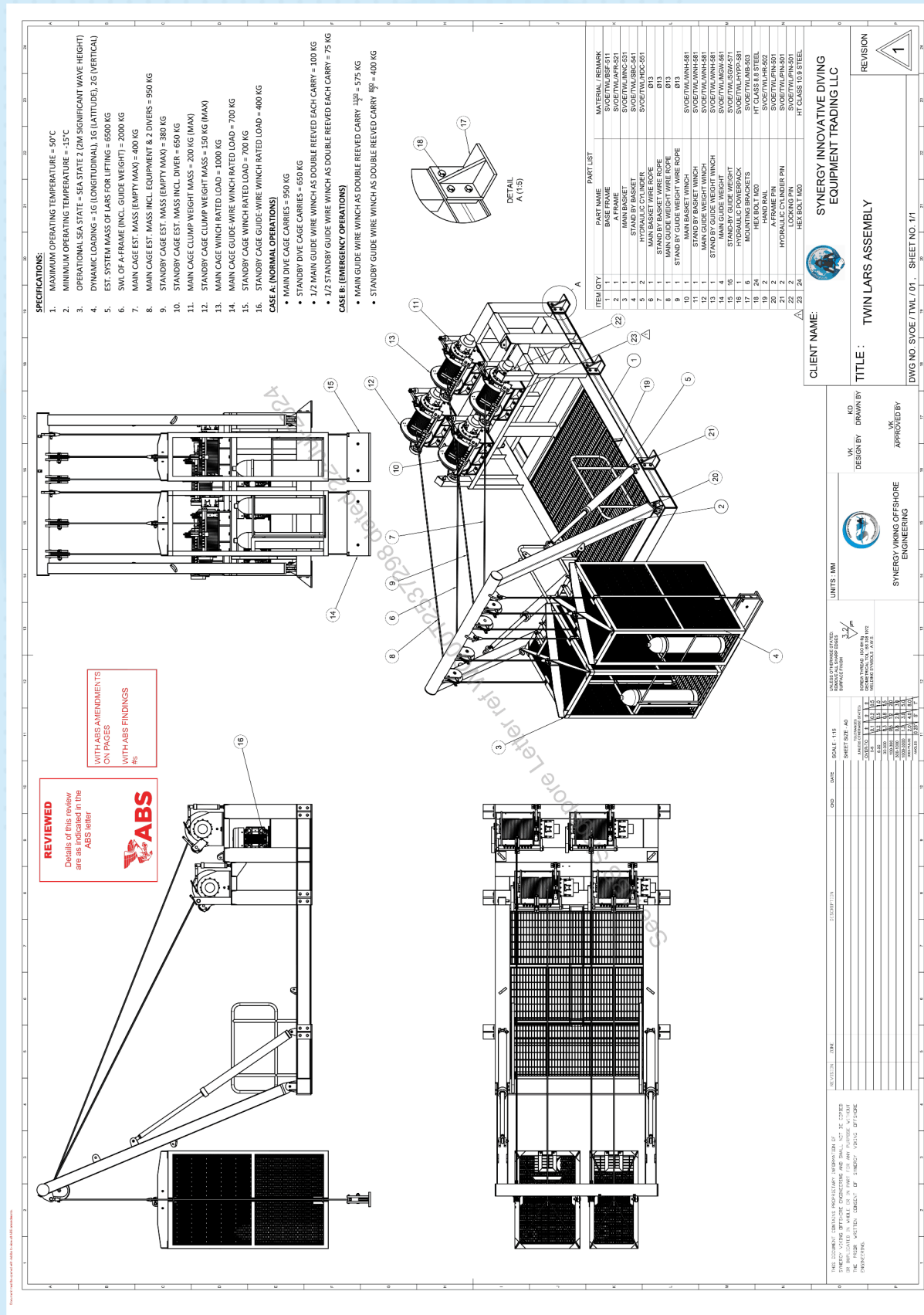
1	CUSTOM 4 LEG SLING SET	4	STAND-BY BASKET
2	BASE FRAME	5	A-FRAME
3	MAIN BASKET	6	LIFTING LOCKING PIN





## ABS-Classed 3-Diver Twin Basket Launch & Recovery System (LARS)

## GA Drawing







# SYNERGY

INNOVATIVE DIVING EQUIPMENT TRADING LLC

INSPIRING • ENGINEERING • INNOVATION

UAE • UK • INDIA • AZERBAIJAN

## ABS-Classed 3-Diver Twin Basket Launch & Recovery System (LARS)

## Contact us



### Synergy Innovative Diving Equipment Trading LLC

P.O. Box: 237849, Warehouse  
No.242, 29th street, Behind Al  
Huraiz Est, For Industry, Al Qusais,  
Industrial Area - 1, Dubai - U.A.E

+9714 2580533 / +971 50 564 8178  
ram@synergyequipment.com  
www.synergyequipment.com



### Synergy Diving & Oilfield Equipments Trading LLC

P.O. Box: 2419, Office: 216, 2nd  
Floor, Dar Al Salaam Building  
Hamdan Street, Abu Dhabi - U.A.E

+971 50 564 8178 / +971 54 460 1492  
ram@synergyequipment.com  
unilok@synergyequipment.com  
www.synergyequipment.com



### iSubC Diving Equipment Ltd

Units 10 Holly Close, Whitehills Business  
Park Westby With Plumpton, Blackpool,  
FY4 5QP, United Kingdom

+44 1253 767 788 / + 44 7951 966 260  
info@isubc.com  
www.isubc.com



### Synergy Viking Offshore Engineering

Rabale Ttc Industrial Area Road no 20,  
Near Narayan dairy, Navi Mumbai,  
Thane - 400701, Maharashtra, India

+91 98218 90129  
ram@synergyequipment.com  
www.synergyviking.com



### Synergy Group Azerbaijan

Gasaniyev, 14A  
Baku  
Azerbaijan

+99470 330 35 20  
infoazerbaijan@synergyequipment.com  
www.synergyazerbaijan.com

