

## UNDERWATER HYDRAULIC IMPACT WRENCH SY-IW12340C



### SPECIFICATIONS

<b>Capacity</b>	¾" / 19 mm Square Drive
<b>Torque</b>	250 -1200 ft lbs / 340-1632 Nm
<b>Flow Range</b>	4-12 gpm / 15-45 lpm
<b>Working Pressure</b>	1000-2000 psi / 70-140 bar
<b>Full Relief Setting</b>	2250 psi / 155 bar
<b>Weight</b>	14 lbs / 6.4 kg
<b>Length</b>	11¼" / 28.6 cm
<b>Width</b>	4" / 10.2 cm
<b>Hydraulic Ports</b>	-8 SAE O-ring
<b>Connect Size and Type</b>	¾" Male Pipe Adapter
<b>Couplers</b>	(See Ordering Information)
<b>Hose Whips</b>	No (See Accessories)

### FEATURES

- Integral Stanley Hyrevz gear motor produces high torque
- Stainless Steel spools and fasteners
- Forward-Reverse with variable speed
- Pistol grip style handle
- Adjustable impact intensity
- 1200 ft lbs/1632 Nm of maximum impact torque
- Oversized trigger with guard for operator comfort
- Plastisol handle for comfortable ergonomic grip
- Durable swing hammer mechanism
- Cast-in lifting eye



The Stanley **IW12** is a medium duty ¾" square drive impact wrench designed for underwater bolting and drilling applications. Powered by a Stanley integral Hyrevz motor, the **IW12** has a durable swing hammer impact mechanism with adjustable impact intensity from 250 to 1200 ft lbs (340 to 1632 Nm) of torque. Designed to run from a wide range of hydraulic circuits, this wrench allows underwater bolting in the most extreme applications. Trigger guard and hi-visibility yellow paint is standard.



## UNDERWATER HYDRAULIC IMPACT WRENCH SY-IW12340C

# ORDERING INFORMATION

### PART NUMBER

**IW12340C** Impact Wrench, Underwater, 3/4" Square Drive, less couplers

**IW1234001** Impact Wrench, Underwater, CE, 3/4" Square Drive, with couplers

### ACCESSORIES

**03971** Flush-Face Coupling Set, 3/8" NPT

**03974** Flush-Face Coupling Set, 1/2" NPT

**06830** Hose Whip 18" long, -8 SAE x 1/2" NPT

**31848** Dual Hose, 50' x 1/2", with couplers

**31972** Dual Hose, 25' x 1/2", with couplers

**58633** Twinned Hose, 25' x 1/2", with couplers

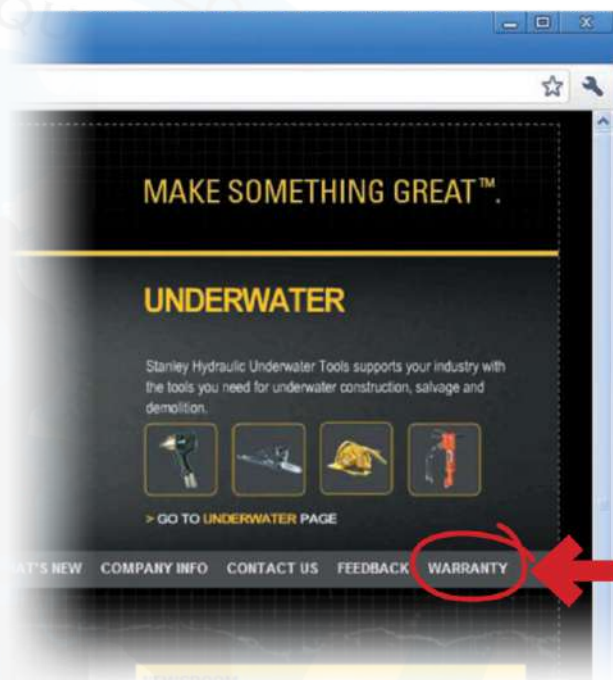
**58634** Twinned Hose, 50' x 1/2", with couplers

**01857** Adjustable Chuck & Adapter 3/4" sq female x 3/4" Chuck

When hydraulic hose exceeds 100' (30.4 m) in length, increase I.D. of both pressure and return hose. For more information, consult Stanley Hydraulic Tools.

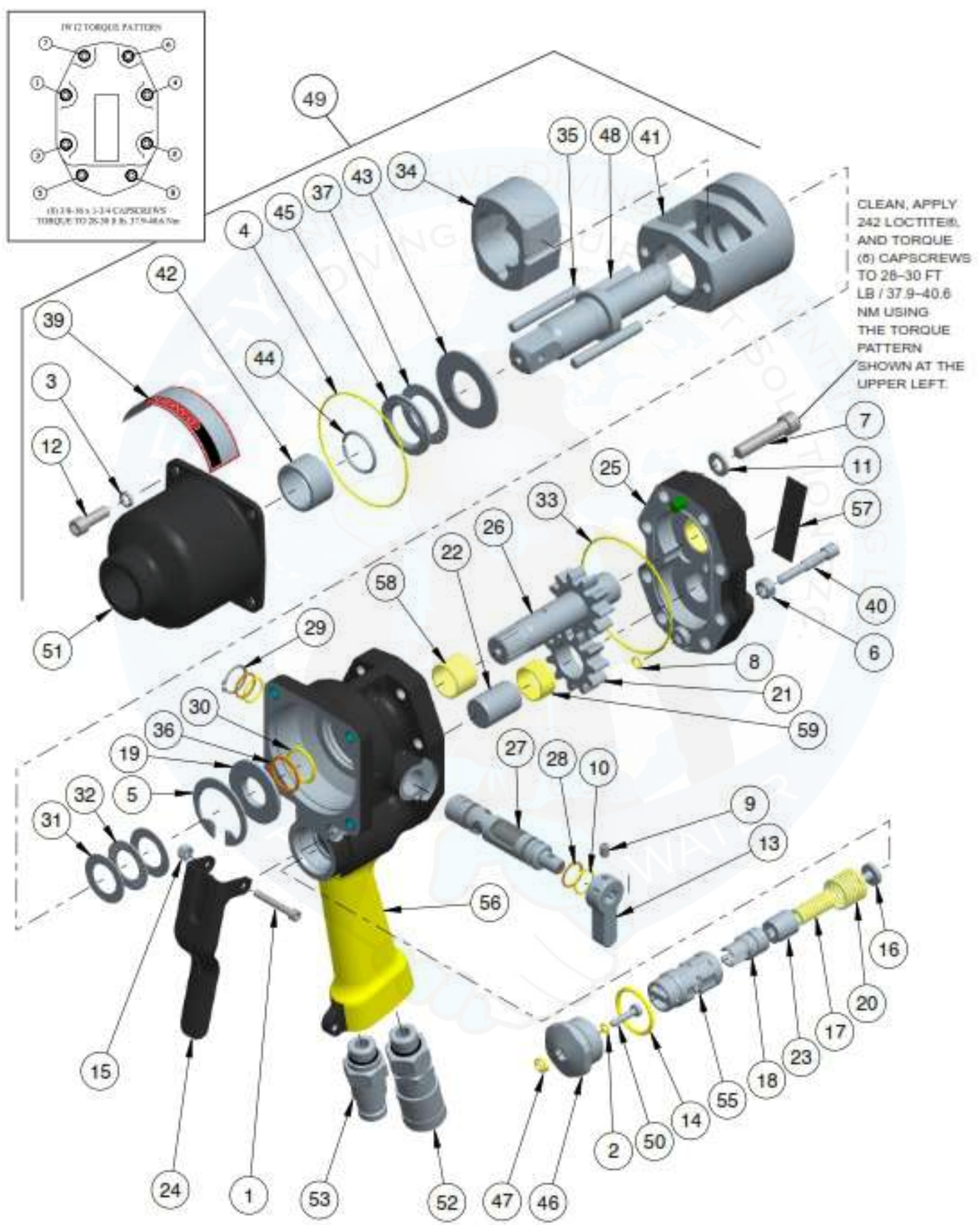
### IMPORTANT

To fill out a Product Warranty Recording form and for information on your warranty visit [stanleyhydraulic.com](http://stanleyhydraulic.com) and select the Warranty tab.



**Note:** The warranty recording form must be submitted to validate the warranty.

**UNDERWATER HYDRAULIC IMPACT WRENCH SY-IW12340C**



## UNDERWATER HYDRAULIC IMPACT WRENCH SY-IW12340C

Item No.	Part No.	Qty	Description
1	00025	1	HSHCS 10-24 X 1-3/4 *
2	00026	1	O-RING
3	00145	4	LOCKWASHER 5/16" I.D.
4	00149	1	O-RING *
5	00166	1	RETAINING RING
6	00429	1	HEX NUT 5/16-18UNC
7	00682	8	HSHCS 3/8-16 X 1-3/4
8	00717	1	O-RING *
9	00720	1	SETSCREW 1/4-20 X 3/8
10	01211	2	O-RING *
11	01459	8	LOCKWASHER 3/8" I.D.
12	02685	4	HSHCS 5/16-18 X 7/8
13	04939	1	LEVER
14	06533	1	O-RING *
15	06971	1	NYLOCK NUT 10-24UNC
16	07982	1	SPRING REST
17	07985	1	COMPRESSION COIL SPRING
18	07986	1	RELIEF SEAT
19	07987	1	BACK-UP WASHER
20	07988	1	COMPRESSION COIL SPRING
21	07989	1	IDLER GEAR ASSY (INCLUDES ITEM # 59 BUSHING)
22	07991	1	IDLER SHAFT
23	07993	1	RELIEF POPPET
24	07996	1	TRIGGER (USED ON MODELS IW12140 & IW1234001)
	28536	1	TRIGGER (USED ON MODELS WITH TRIGGERLOCKS IW1214001) SEE PAGE 17
25	07997	1	MOTOR CAP ASSY
26	08001	1	MAIN SHAFT
27	08002	1	REVERSING SPOOL
28	08015	2	BACK-UP RING *
29	08016	1	RETAINING RING EXTERNAL
30	08017	1	O-RING *
31	08019	2	THRUST WASHER
32	08020	1	THRUST BEARING
33	08023	1	O-RING *
34	08067	1	HAMMER
35	08069	2	HAMMER PIN
36	09396	1	BACK-UP RING *

Item No.	Part No.	Qty	Description
37	09878	1	THRUST BEARING
38	15875	1	WARNING TAG (NOT SHOWN)
39	17275	1	WARNING STICKER-ELECTRICAL
40	19453	1	RELIEF ADJUSTMENT SCREW
41	20257	1	HAMMER FRAME
42	20258	1	BUSHING
43	20259	1	RETAINER
44	20262	1	RETAINING RING
45	21408	1	THRUST BEARING RACE
46	22063	1	SPOOL CAP
47	22064	1	ROD WIPER *
48	22728	1	ANVIL 3/4 SQ DRIVE
49	22729	1	IMPACT MECHANISM 3/4 SQ (DOES NOT INCLUDE ITEMS 3, 12 & 39)
	35451	1	IMPACT MECHANISM U/W 3/4 SQ (DOES NOT INCLUDE ITEMS 3, 12 & 39)
50	23678	1	HEADED PUSH PIN
51	29087	1	HAMMER CASE
52	58856	1	3/8 FF COUPLER BODY MALE (SET 58718)
53	58857	1	3/8 FF COUPLER NOSE MALE (SET 58718)
55	73046	1	ON/OFF SPOOL-OC
56	73312	1	MAIN HOUSING ASSY (INCLUDES ITEM # 58)
57	73683	1	NAME TAG - IW12
58	08014	1	BUSHING (SEE ITEM # 56)
59	07978	1	BUSHING (SEE ITEM # 21)

Seal Kit P/N-13695

\* Denotes Parts found in seal kit

**UNDERWATER HYDRAULIC IMPACT WRENCH SY-IW12340C**

# Contact us



29th Street, Amman Road, Behind Al Huraiz Est. For Industry,  
Al Qusais, Industrial Area – 1,  
Dubai, United Arab Emirates



Tel : 009714 2580533 



Fax : 042516664 



UAE : 00971505648178 



UK : 00447951966260 



Website : [www.synergiequipment.com](http://www.synergiequipment.com)



Email : [ram@synergiequipment.com](mailto:ram@synergiequipment.com)



For Sale : [info@synergiequipment.com](mailto:info@synergiequipment.com)

